



# Preserving the Lodge for the 21st Century

## Conant Lodge Capital Campaign

*Help preserve Cold River Camp for future generations*

**C**old River Camp is one of the places on Earth we care about most. It has nourished us as individuals, literally and figuratively. The Camp has connected generations of our families in shared experience. In 2019, the Camp reached an important milestone, celebrating its Centennial year. To ensure that Cold River Camp nourishes its guests for the next 100 years, its volunteer leadership is launching a Conant Lodge Capital Campaign to pay for renovating Conant Lodge. The campaign is a part of a plan to responsibly accommodate the future needs of the Camp while maintaining an affordable annual outdoor experience for all.

### Why This Project, Now?

Structural issues with the current dining porch propelled the Cold River Camp Committee to look beyond a short-term solution and consider Conant Lodge's long-term future. The Conant Lodge Planning Committee was formed to undertake a comprehensive study of the building's treasured attributes, uses, and any deficiencies. The Planning Committee ultimately formulated a com-

prehensive plan that it reviewed extensively with Camp guests during the 2019 season. The proposed changes, which were approved by the Cold River Camp Committee and the Appalachian Mountain Club (AMC), reflect not only the input of the Camp staff and more than 200 guests, but also our Camp's history and aesthetics, the AMC's greater mission, building codes, diversity of uses, and financial considerations.

### Conant Lodge for the 21st Century

Cold River Camp has thrived for more than a century because of its efficient operation, robust guest numbers, and thousands of hours of volunteer labor. Without jeopardizing the Camp's character or its operating model, the following Conant Lodge improvements will preserve the beloved building's character and feel as well as enhance guests' experience:

- Remove the dining room porch, replace with deck, restore original look of Lodge
- Add living room and dining room space, meeting ADA standards
- Improve guest bathroom availability, meeting ADA standards
- Integrate solar energy as a means of reducing carbon footprint
- Modernize the kitchen to increase operating efficiency and enhance the working environment

For more information, please visit [amccoldrivercamp.org](http://amccoldrivercamp.org) or email [amc.crcchair@gmail.com](mailto:amc.crcchair@gmail.com)

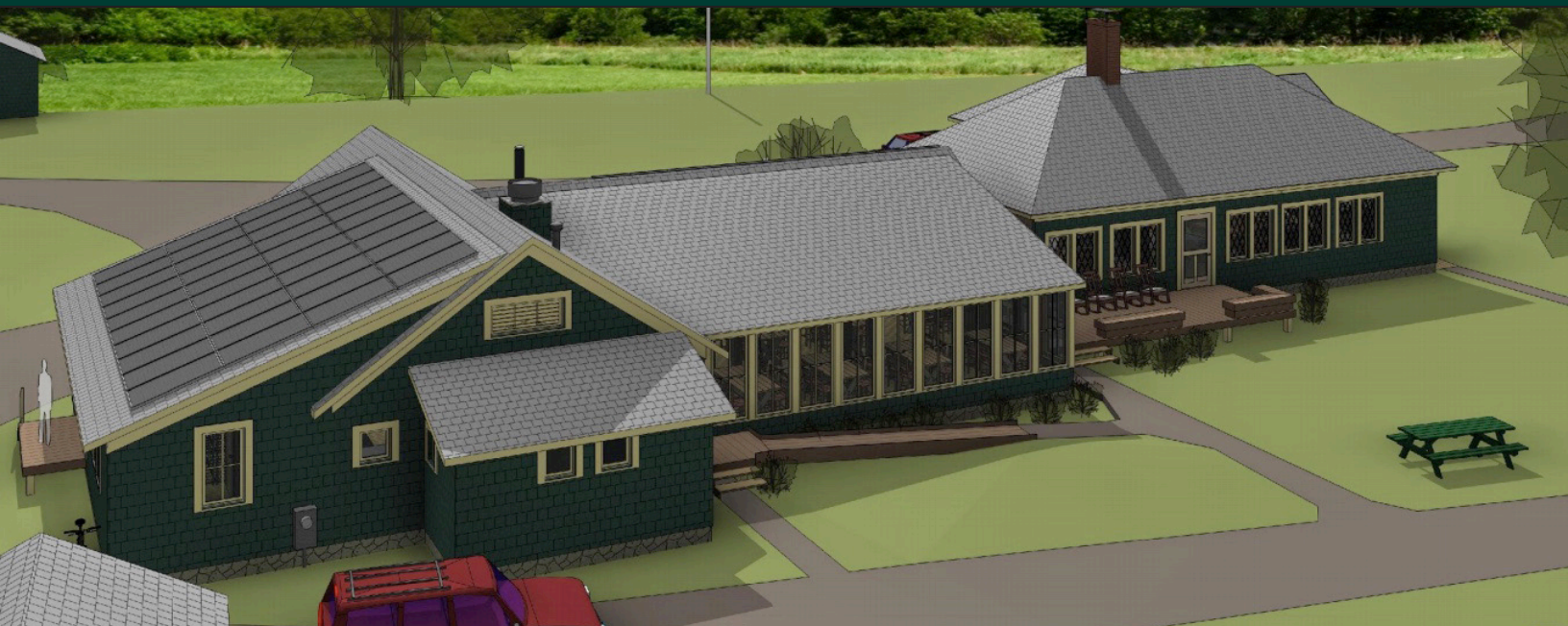




## Campaign Management, Goal & Timeline

As a facility of the AMC, Cold River Camp is working in partnership with the AMC to ensure that this project is successful. The AMC's professional staff will help the Camp's volunteer capital campaign team with the fundraising process, which will continue through the end of 2022. The Conant Lodge project cost estimate is \$1.2 million.

The CRC Committee has approved allocating \$100,000 from Camp's cash reserves to the campaign. We seek to raise the remaining amount from donors who may fulfill their pledges over a three-year period. The AMC will lend funds to Cold River Camp against those pledges, if needed, to begin construction in 2021.



## Conant Lodge History

In 1919 Theodore Conant, one of the original Camp Committee members and founders, paid for the purchase of what became the Appalachian Mountain Club's Cold River Camp, including the Lodge that now bears his name. Since that time, the Lodge

has welcomed more than 50,000 guests, serving as the principal gathering place for starting trail adventures, socializing with new friends and old, enjoying meals and games, and watching the valley's ever-changing weather and seasons.